



Sanborn Maps of New York 1867-1970

1. To access the database go to the library's webpage (www.buffalolib.org) and click on the **Research + Resources** link located near the top of the page. Select Databases A-Z and then select the Genealogy category and click on the database name – **Sanborn Maps of New York 1867-1970**.

2. Once you are in the database select the Browse and Explore button.

3. Select the State, City, and Date.

About Digital Sanborn Maps, 1867-1970

Welcome. Founded in 1867 by D. A. Sanborn, the Sanborn Map Company was the primary American publisher of fire insurance maps for nearly 100 years. The maps provide a wealth of information, such as building outline, size and shape. Come explore America's rich and diverse building history.

[Browse and Explore](#)

A Visual Expression of History

Produced for over a century, more than 660,000 Sanborn maps chart the large-scale plans of a city or town, drawn at a scale of 50 feet to an inch, with insuring a particular property. The maps list street blocks and buildi

1. Select a state
State:

2. Select a city
City:

3. Select a date
Date:

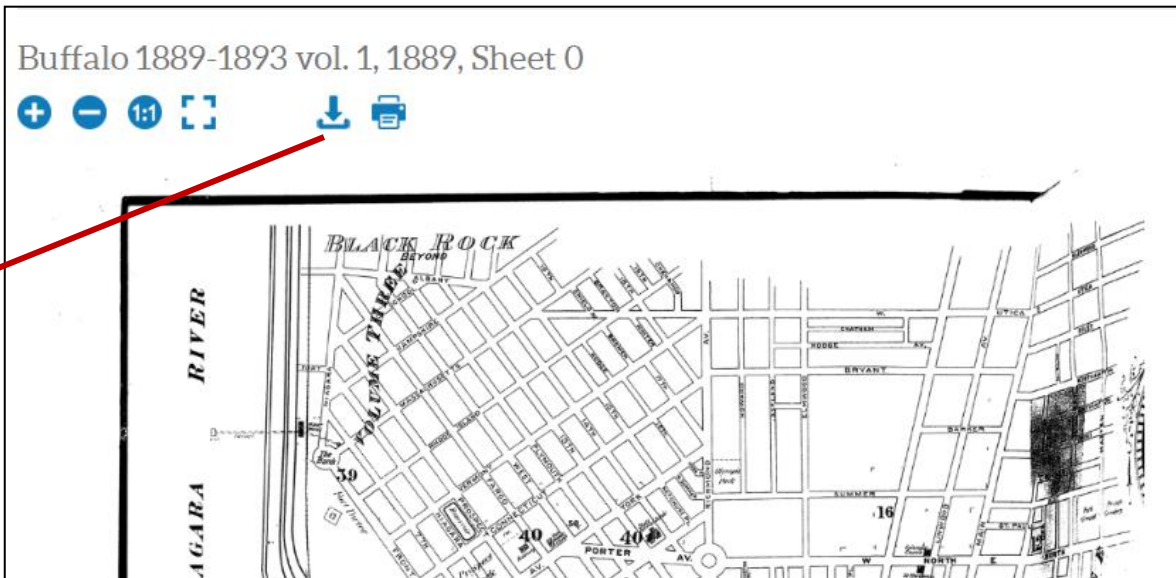
4. Maps sets for large cities will include a key sheet which provides an overview map showing map plate numbers and volume numbers. Click on "Key, Sheet 0" to see a sample overview map.

State: City: Date: Volume:

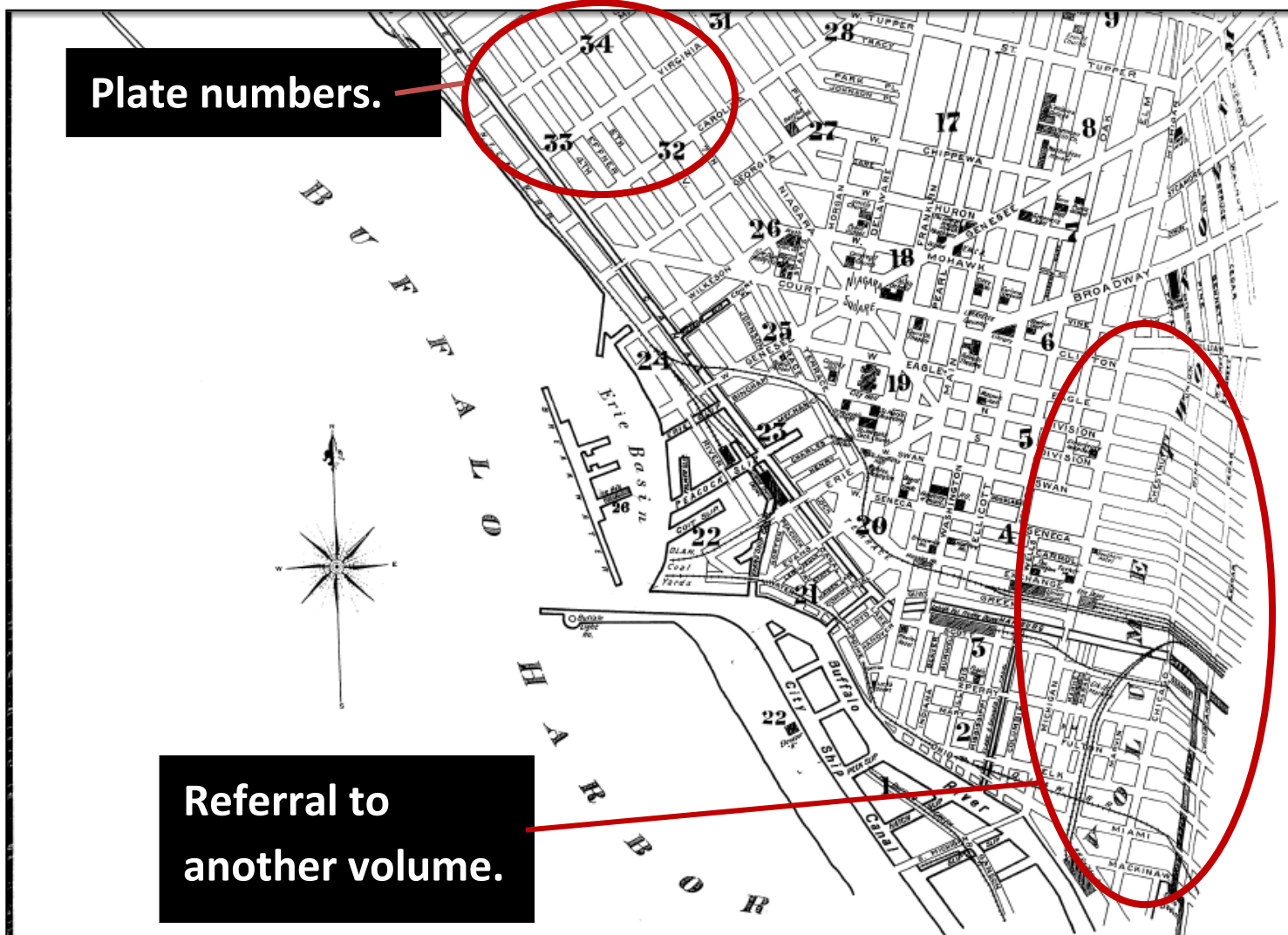
Editor's Notes: Includes map of elevator district and double-paged plates numbered 1-40. Bound

Key, Sheet 0	Key, Sheet 0a	Index, Sheet 0b	Sheet 0c	Sheet 0d	Sheet 1_a	Sheet 1_b
Sheet 3_a	Sheet 3_b	Sheet 4_a	Sheet 4_b	Sheet 5_a	Sheet 5_b	Sheet 6_a

5. A window will open with a map viewer. You can zoom in/out, make the image full screen, download and print the image.



5. The map shows the plate numbers for the volume that you are currently in. If the area you are looking for is outside the boundaries of the current volume, the overview map will refer you to the appropriate volume.



9. Next, select the thumbnail image for "Sheet 6_a."

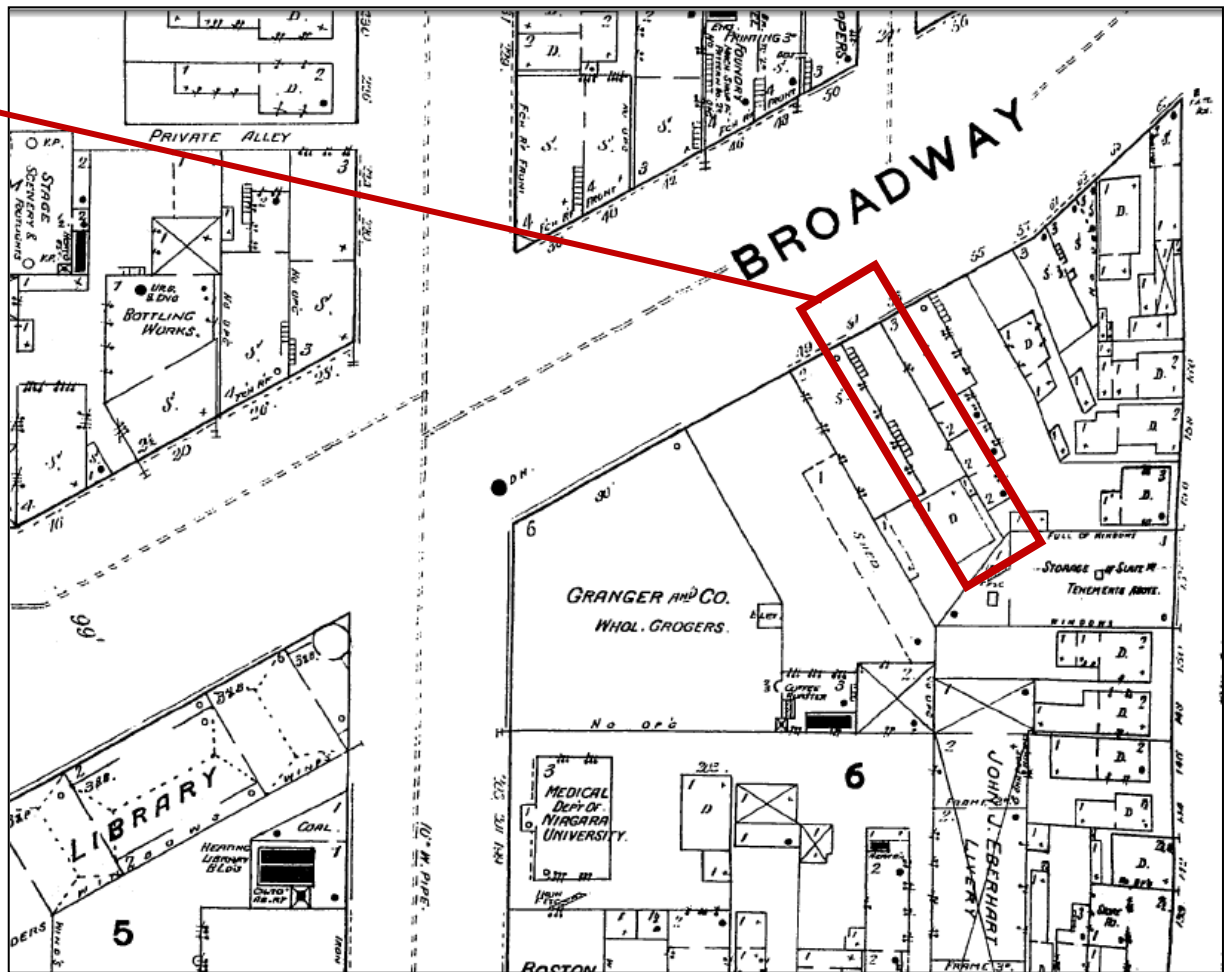
State: City: Date: Volume:

Editor's Notes: Includes map of elevator district and double-paged plates numbered 1-40. Bound

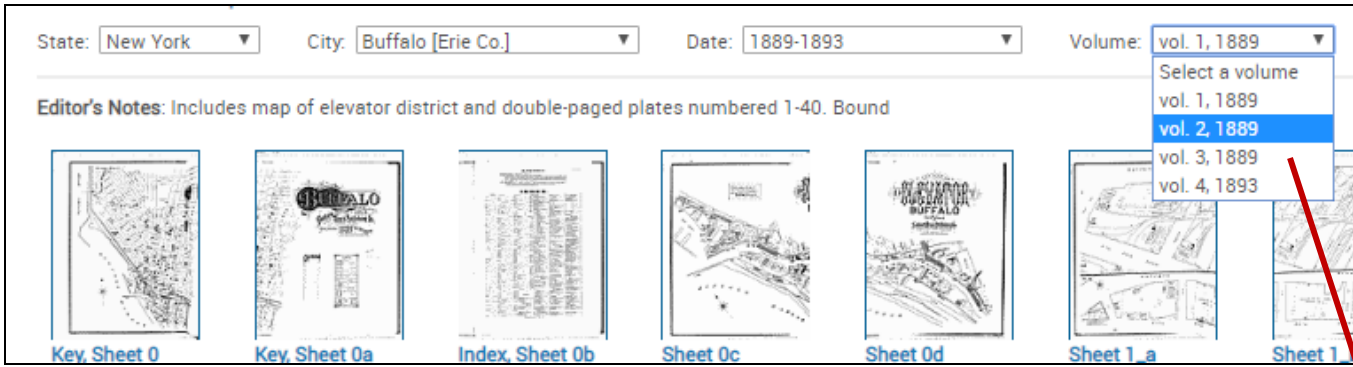
Key, Sheet 0 Key, Sheet 0a Index, Sheet 0b Sheet 0c Sheet 0d Sheet 1_a Sheet 1_b

Sheet 3_a Sheet 3_b Sheet 4_a Sheet 4_b Sheet 5_a Sheet 5_b Sheet 6_a

10. Here is 51 Broadway.



11. Use the back arrow on the internet browser. This will bring you back to the list of thumbnail images.



12. You can change the city, date, or volume from your results screen anytime after your initial search. Change the Volume to 2.

13. Select the "Index, Sheet 0b."

14. Here we will view the Specials index. A specials index lists places such as named city blocks, businesses, places of worship, schools, and other prominent buildings. The specials index will follow the street index. Navigate to the L section and look for the Larkin Soap Works.

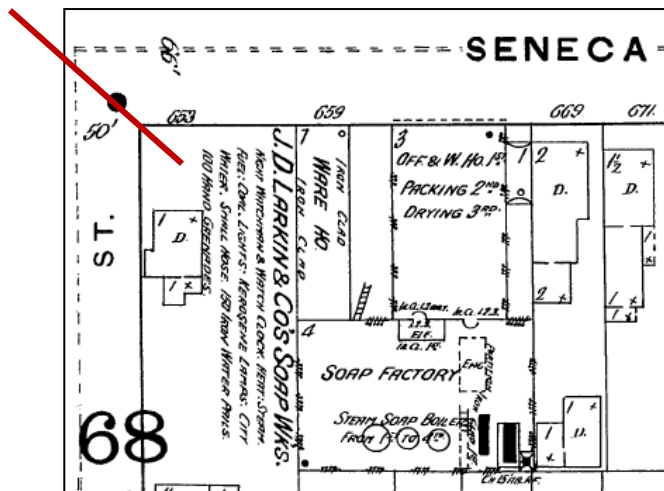
SPECIALS.		
A		Joel
Altmann, F. W., Wagon Shop,.....		Joel
American Glucose Co.,.....		John
Arstill, A., Shoe Factory,.....		John
Atlas Refining Co.,.....		John
B		
Ball Bros. Glass Mfg Co.,.....		King
" J. W. H., Coal Yard,.....		King
Banner Milling Co.,.....		King
Barker, O. W., Wagon Works,.....		King
Baynes Garbage Creamtory Works,.....		King
Becherer, F., Slaughter House,.....		King
Beck, A., Slaughter House,.....		King
" M., Brewing Co.,.....		Lake
Bingham & Taylor, Foundry,.....		L. S.
Holler & Recktenwalt, Planing Mill,.....		"
Brainard House,.....		Lake

	SHEET
Lang, J. Malt House,.....	60
Larkin, J. D., & Co., Soap Works,.....	67
Lamb & Zeller, Tannery,.....	62
Lehigh Docks Coal Yard,.....	42
" Valley Coal Co.,.....	54
Lime Lake Ice Co.,.....	55
Long, J. J., Hay Warehouse,.....	69
M	

15. The Larkin Co. is on sheet 67. Use the back arrow on your browser to go back to the thumbnail images.

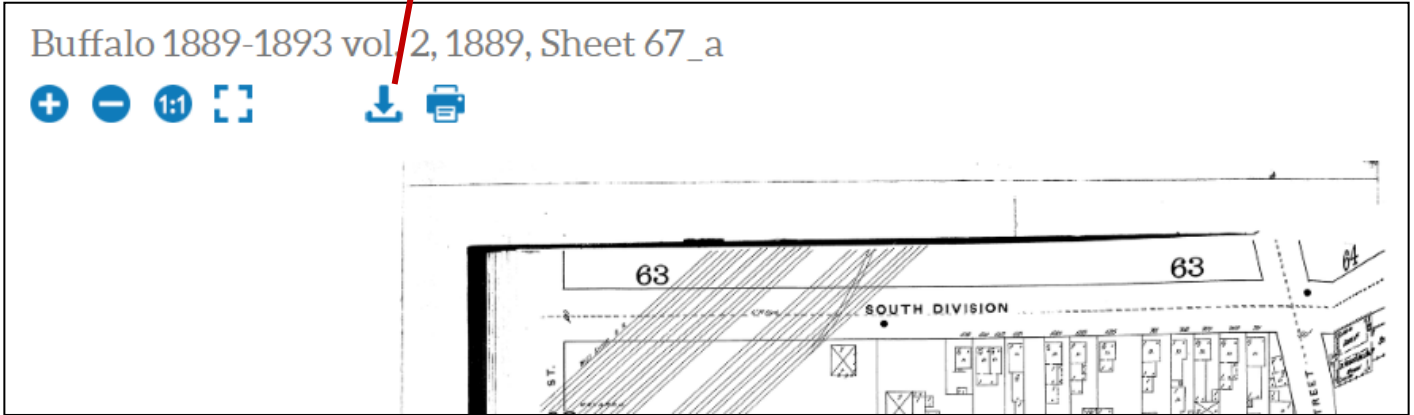
16. Choose "Sheet 67_a."

17. The Larkin Co. is near the bottom left of the map on Seneca and Heacock Streets.



Printing Instructions

1. It is recommended to download (arrow and bracket icon) the map as a PDF file and then print it.



1. Click the Print button. The Print box will open. Then set the Page Sizing to "Fit." Then select "Print."

